

Career support

The science centre exposes learners to career opportunities which exist within the STEM related sectors, this is done through exhibitions, job shadow programmes and other career related programmes. The science centre also hosts annual focus weeks where learners are assisted with application forms for academic admissions, bursary and funding applications.

Special events

The science centre is involved in other events, such as the National Science Week, Sci-Fest Africa, Eskom Expo for Young Scientists and many more.



NELSON MANDELA BAY
SCIENCE CENTRE

Operated by  **mandela bay**
DEVELOPMENT AGENCY
RENEW • REVIVE • INSPIRE



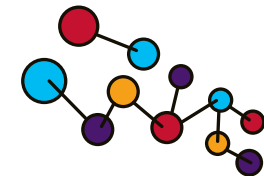
For more information about the programmes and bookings
041 991 5000



zukiswa.jacobs@mbda.co.za



Like our page on Facebook:
Nelson Mandela Bay Science and Technology Centre



NELSON MANDELA BAY
SCIENCE CENTRE

Operated by  **mandela bay**
DEVELOPMENT AGENCY
RENEW • REVIVE • INSPIRE



NMB Science and Technology Centre programmes

The Nelson Mandela Bay Science and Technology Centre is a project of the Mandela Bay Development Agency, an entity of the Nelson Mandela Bay Municipality. The science centre is aimed at promoting Science, Technology, Engineering and Mathematics (STEM).

Vision

Access to Science, Technology, Engineering and Mathematics (STEM) for all.

Mission

To be a dynamic institution that provides access to STEM for all citizens through focused programmes.

Goals

- To provide educational support programmes to teachers and learners.
- To expose learners to career opportunities in STEM.
- To identify and nurture poorly resourced schools in the region.
- To be a centre where the community, both adults & children alike can explore, experience and learn about STEM in an interactive and exciting way.



Programmes In-house programme

Curriculum aligned practicals

The science centre has a fully equipped laboratory that is used for delivering curriculum based practicals, in the areas of- Physical Sciences, Life Sciences and chemistry. The experiments performed are all CAPS prescribed, aimed at providing supplementary support to learners.

Schools can contact the science centre to view the list of the practicals offered.

Exhibitions

The NMBSTC has an exhibition space of approximately 3400 m², which is divided into 8 zones with interactive exhibits in the following areas- Automotive, Energy and electricity, Life sciences, Momentum, games, and light and optics. The area also consists of a climbing wall and construction zone for kids. The interactive exhibits are designed to increase awareness around STEM and support the theoretical background that is provided in the classrooms.



School Tours

The school group tours are part of the in-house programmes and they cater for all grades. These tours expose learners to the “why” and “how” of science through a variety of activities, such as- science shows, workshops and interactive exhibits. For more information about the science shows and workshops offered, please contact the centre.

Outreach Programme:

The outreach programme focuses on supporting poorly resourced schools to enhance the quality of education. The outreach programme delivers practical demonstrations to translate the theory learnt in the classroom to practice. The programme is facilitated during weekdays and provides support to 34 schools in the Nelson Mandela Bay Metro.

Holiday programme

This programme aims to educate learners while entertaining them. The learners get to explore science, technology and mathematics through fun interactive activities. The programme caters for learners from ages 5 – 16 and runs during the school holidays.

Science club

The science club is an afterschool programme, which serves as a support base for learners wishing to participate in educational science events. The science centre prepares the learners for competitions, such as Eskom Expos, Science Olympiads, Maths Olympiads, Science debates and other competitions.

